

**brother**<sup>®</sup>  
at your side

Garment  
Printer

**GT-782**

With its dual platen and print-head modules, the Brother<sup>®</sup> GT-782 white ink-capable workhorse garment printer is perfect for mid-to-high volume production shops.

With superior quality output and Brother reliability, the GT-782 also serves a variety of small-lot production jobs cost-effectively and with a wide range of color options.



# Help production and performance with the GT-782, that offers high productivity, reliability and flexibility.

## Achieving high productivity

Equipped with dual, independently controlled platens and print-head modules, the GT-782 printer provides high productivity by concurrently printing both white and colored inks. Furthermore, the unique Brother® print driver eliminates the need for RIP software. The GT-782 can receive continuous job files while printing, allowing for maximum, efficient production. It's a cost-effective solution for both high volume shops and small production runs.

**No waiting!  
Continuously receive  
and queue next job file  
while printing!**

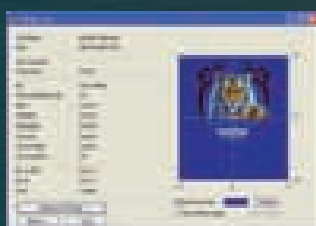
**One-pass  
White Mode**

Approx. **50** pcs./hour\*

**Two-pass  
White Mode**

Approx. **30** pcs./hour\*

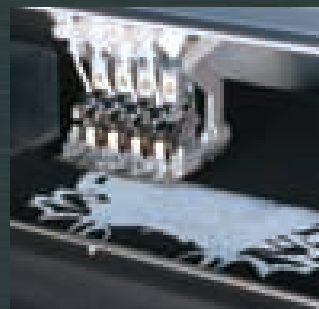
\*The productivity will vary depending on conditions. The white modes use under-base white and high-light white. Above estimates are within the temperature range of 64F to 86F, including loading & unloading of garments, not including pre-treatment and post-cure, for an approx. 12" x 10" image.



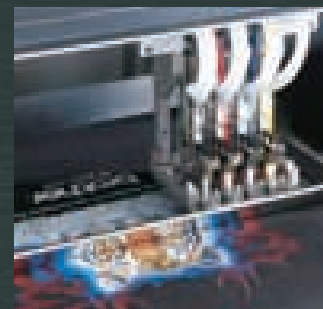
**1** Create an image.



**2** After the pretreatment, set the garment on the platen. Then, press the start button.  
\*Pretreatment is necessary before printing.



**3** The print starts with white ink printing.



**4** Color printing is performed.

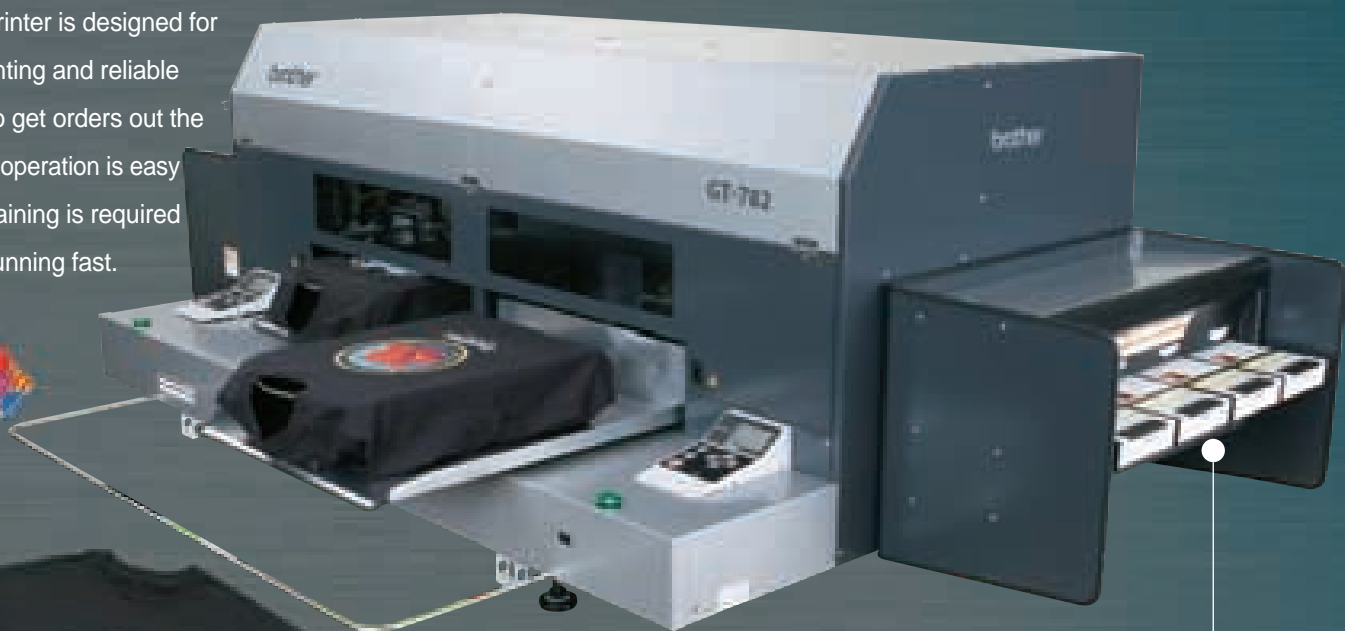
# a new workhorse garment printer

## And it's so easy to use!

# Garment Printer GT-782

### Engineered for durability and reliability

The GT-782 Printer is designed for continuous printing and reliable performance to get orders out the door fast. Print operation is easy and minimal training is required to be up and running fast.



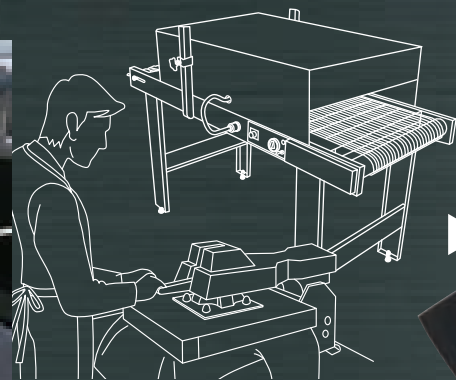
### Easy ink replacement

Independently controlled, single color ink cartridges eliminate both work area mess and hand staining. In addition, defects caused by air and dust are prevented.



### User-friendly maintenance operation

Like the smaller Brother GT-541 Printer, the GT-782 is simple to maintain. Scheduled maintenance is performed by pushing a series of buttons on the control panel. The ink retrieval system minimizes ink waste during maintenance, which further reduces running costs.



**5** After the printing is completed, ink-cure the garment. Then, it's ready!  
\*Conveyer oven is recommended for the ink cure.  
Additional purchase required.



*\* The time it takes to finish varies depending on the design of the garment.*

# Garment Printer GT-782



Specifications	
Printing Method	Direct Inkjet Garment Printer
Machine Size	106"(W) x 45"(D) x 33"(H) (2,700mm x 1,140mm x 840mm)
Machine Weight	507lb(230kg)
Max Printing Area	16" x 18" (when the optional Large platen is used. For standard shipment platen size is 14" x 16".)
Print Speed (including loading & unloading time)	Light garments : Approx. 60 prints/hour Dark garments : Approx. 50 prints/hour (One-pass White Mode) Approx. 30 prints/hour (Two-pass White Mode)
Ink type	Water based pigment ink
Ink color	5 colors (CMYKW)
Ink-head type	On demand piezo head
Number of Ink-heads	8 print heads, 2 maintenance stations 4 print heads for CMYK, compatible with GT-541. 4 print heads for white
Ink-head resolution	600dpi x 600dpi
Print mode	Single or double for CMYK, Underbase and highlight for white
Environment	Printing conditions:64F(18C) to 86F(30C) Humidity 35 - 85% RH Operating conditions:50F(10C) to 95F(35C) Humidity 20 - 85% RH
Power supply	AC 100V-230V,50/60Hz±1Hz
Power consumption	0.8A(average)
Ink cure	Conveyer oven is recommended to support high productivity of the printer, 320-340F(160-170C) and 5 minutes duration Heat-press machine can also be used, 356F(180C) and 35 seconds duration Time and temperature may vary depending on what manufacture dryer used.
Pre-treatment	Before printing, apply using a manual or automatic device and dry using a heat-press machine.

Software	
Windows® requirements	Windows Vista®, XP English ver., with USB port
Interface & operating system requirements	Windows Print Driver Interface Easy interface (same as GT-541) and no RIP required Under-base white & highlight white volume control Additional easy color manipulation controls(Saturation, Contrast, Ink volume) All major Windows graphic applications are supported USB 1.1/2.0, Compact Flash
Driver operating conditions	256MB RAM(512MB is recommended),128MB of available hard disk space(256MB is recommended) 1GHz CPU(2GHz is recommended)
Recommended PC applications	Adobe Photoshop®, Paint Shop Elements®,(For bitmap data editing), Adobe Illustrator®, CorelDRAW(For vector data editing),Paint Shop Pro

Others	
USB cable	USB2.0 cable (AB type)
Compact Flash	Type I memory card, capacity of 128 MB to 2 GB FAT16 formatted San Disk Compact Flash is recommended.
Recommendable substrate	100% cotton (final results may vary depending on blend type of materials)

Product specifications are subject to change for improvement without notice.  
Photographs are for illustration purposes. They may not represent actual operating conditions and may display optional parts.

Please read instruction manual before using the machine for safe operation.  
Microsoft, Windows and Windows Vista are registered trademarks or trademarks of Microsoft Corporation in the United States and other countries.  
Corel, CorelDRAW, and Paint Shop Pro are registered trademarks or trademarks of Corel Corporation.  
Adobe, Adobe Photoshop, Paint Shop Elements and Illustrator are registered trademarks or trademarks of Adobe System Incorporated in the United States and other countries.  
CompactFlash is trademark of SanDisk Corporation registered in the United States and other countries.

## Optional Accessories and Consumables

<b>Ink cartridge, other</b>	
	250cc / 500cc
White ink cartridge	GC-50W50
Cyan ink cartridge	GC-50C25 / GC-50C50
Magenta ink cartridge	GC-50M25 / GC-50M50
Yellow ink cartridge	GC-51Y25 / GC-51Y50
Black ink cartridge	GC-50K25 / GC-50K50
Pre-treatment liquid	GC-50P2L
<b>Optional parts</b>	
Large platen 16" x 18"	SB0525001
Youth platen 10" x 12"	SA6399401
Baby platen 7" x 8"	SA8213401
<b>For maintenance</b>	
Cap cleaning kit	SA5774301
Nozzle cleaning kit	SA5885301
Platen sheet	SA5620301
Platen sheet S	SA6401301
Platen sheet SS	SA8211201
Platen sheet L (16" x 18")	SB0527001
Wash Liquid Assy (Eye drop type wash)	SA6248301
Maintenance Solution	GC-50S2L
Cleaning Cartridge Assy(Compatible with GT-541)	SA5718101

## RoHS Compliant

GT-782 is compliant with the RoHS Directive (the restriction of the use of certain hazardous substances in electrical and electronic equipment) which came into effect in the EU in July 2006.

**brother**®

**BROTHER INDUSTRIES, LTD.**

1-5, Kitajizoyama, Noda-cho, Kariya-shi, Aichi 448-0803, Japan.  
Phone: 81-566-95-0086 Fax: 81-566-25-3721 <http://www.brother.com/>



Brother Industries, Ltd. Machinery & Solution Company  
Kariya and Minato plants acquired ISO 9001 and 14001 certifications.

**AMERICA**  
**BROTHER INTERNATIONAL CORPORATION**  
<http://www.brother.com/> +1-908-704-1700

**EUROPE**  
**BROTHER INTERNATIONALE INDUSTRIEMASCHINEN G.m.b.H.**  
<http://www.brother-ism.com/> +49-2822-6090